

---

**INTRODUZIONE**

***INTRODUCTION***

---

## Attack rate per 100.000 Eventi Coronarici, Uomini 35-64 anni

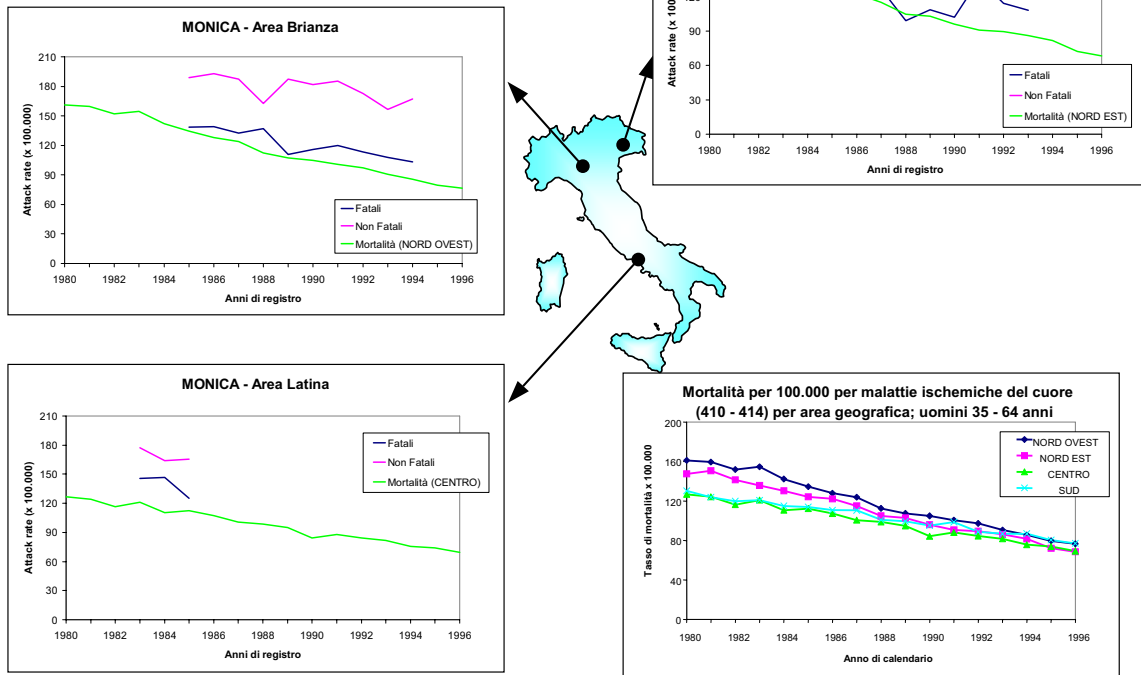


Figure 1. Attack rate and mortality rate per 100,000. Coronary events, men aged 35-64 years. Fatal and nonfatal events. Validated and official mortality; mortality rate in the different geographic areas of Italy, Northwest, Northeast, Center, South and Islands.

## Attack rate per 100.000 Eventi Coronarici, Donne 35-64 anni

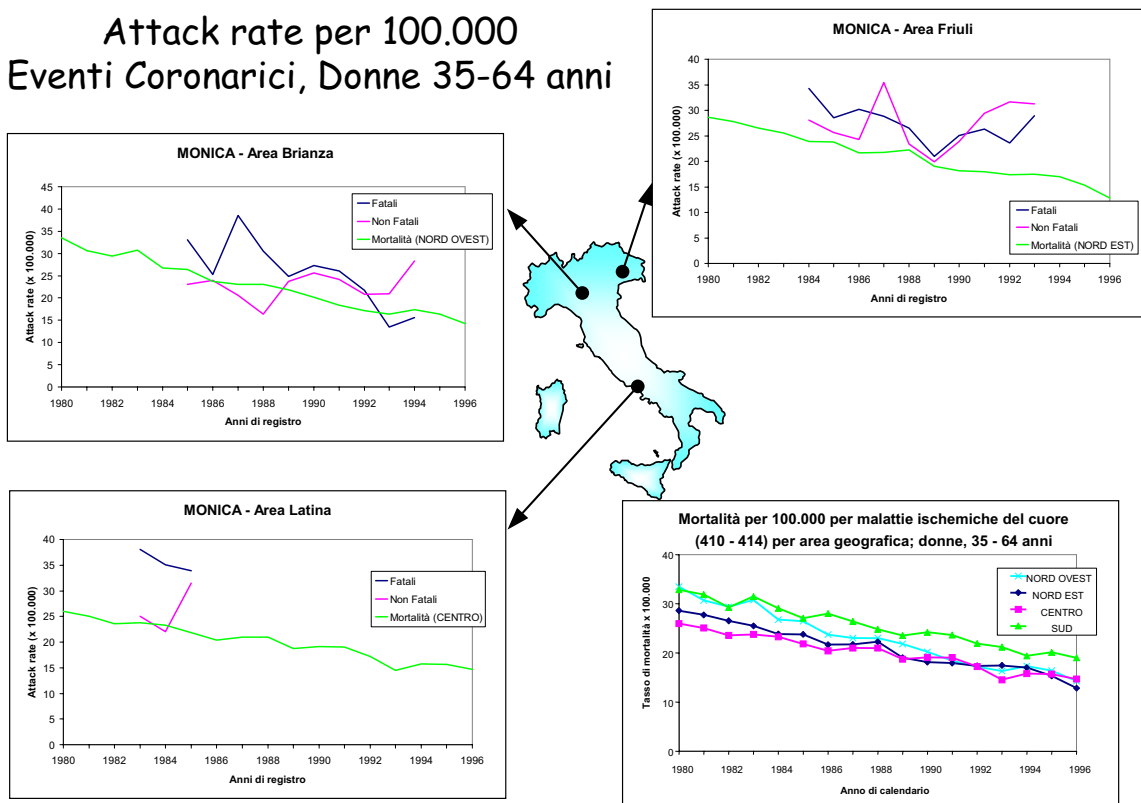
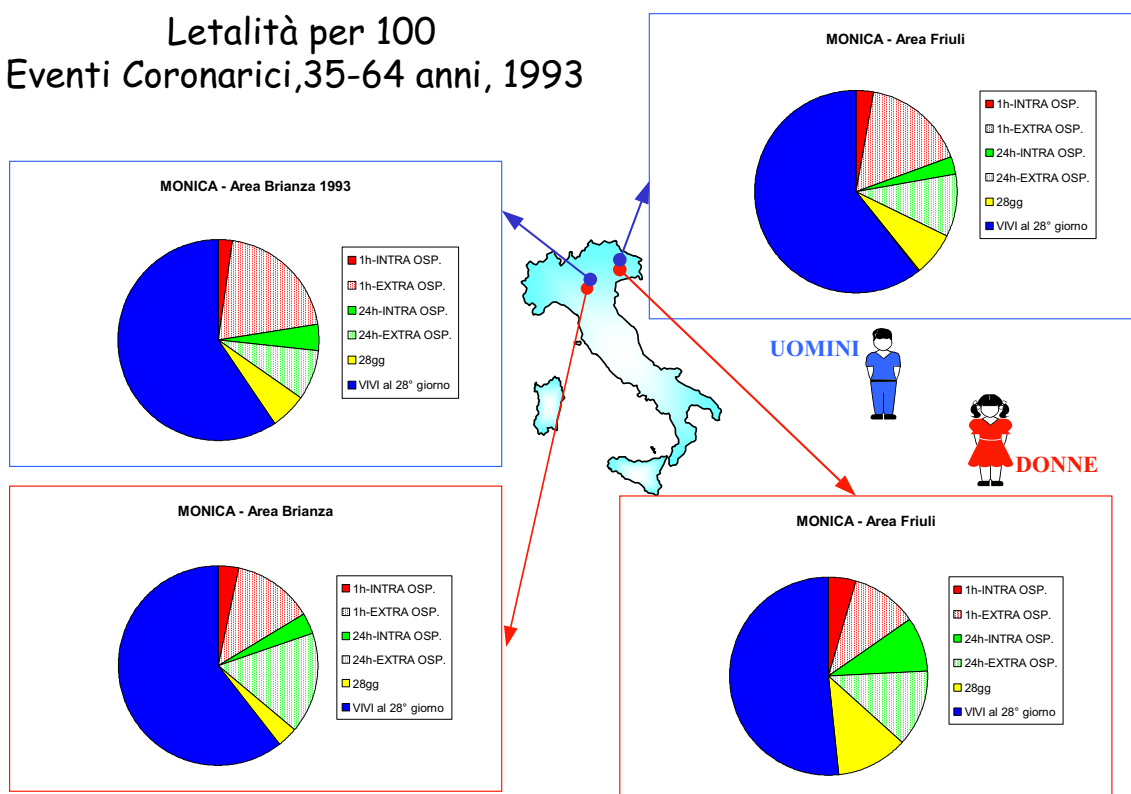


Figure 2. Attack rate and mortality rate per 100,000. Coronary events, women aged 35-64 years. Fatal and nonfatal events. Validated and official mortality; mortality rate in the different geographic areas of Italy, Northwest, Northeast, Center, South and Islands.

### Letalità per 100 Eventi Coronarici, 35-64 anni, 1993



**Figure 3.** Percent case fatality. Coronary events, men and women aged 35-64 years, period 1993. Case fatality is disentangled in 1 hour in-hospital, 1 hour out-of-hospital, 24 hours in-hospital, 24 hours out-of-hospital, and 28 days.

## Attack rate per 100.000 Eventi Cerebrovascolari Uomini 35-64 anni

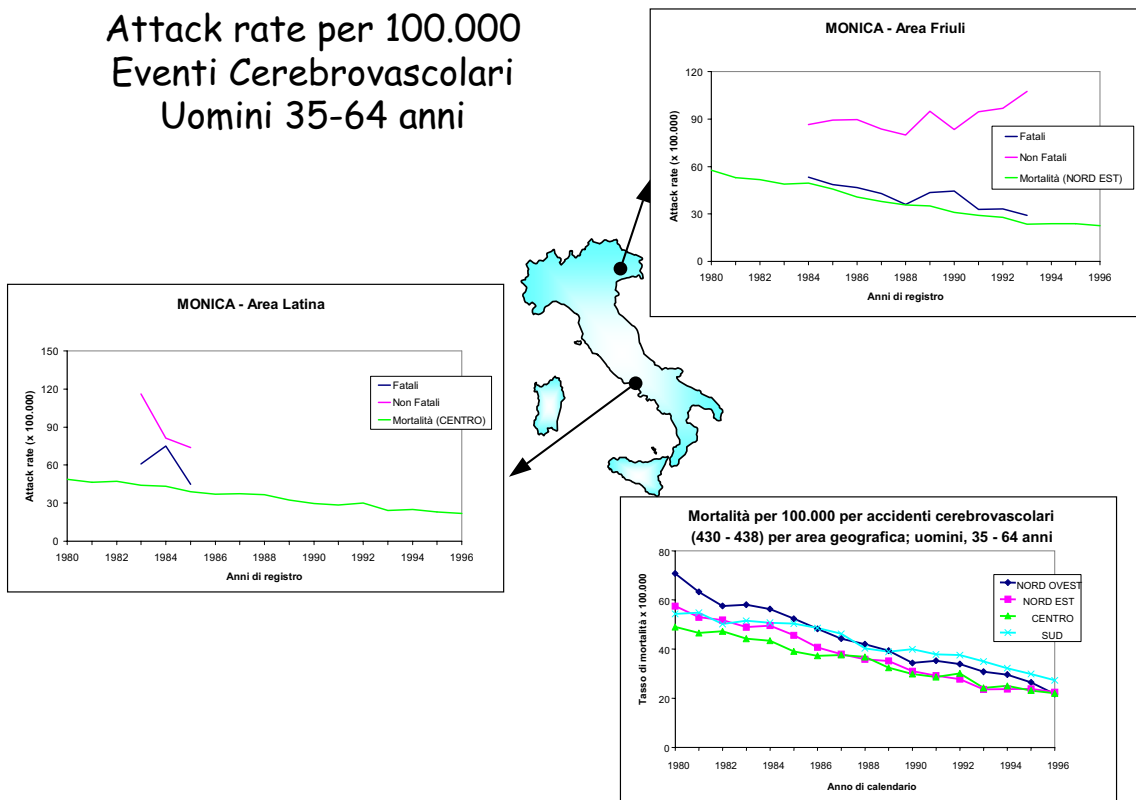


Figure 4. Attack rate and mortality rate per 100,000. Stroke, men aged 35-64 years. Fatal and nonfatal events. Validated and official mortality; mortality rate in the different geographic areas of Italy, Northwest, Northeast, Center, South and Islands.

## Attack rate per 100.000 Eventi Cerebrovascolari Donne 35-64 anni

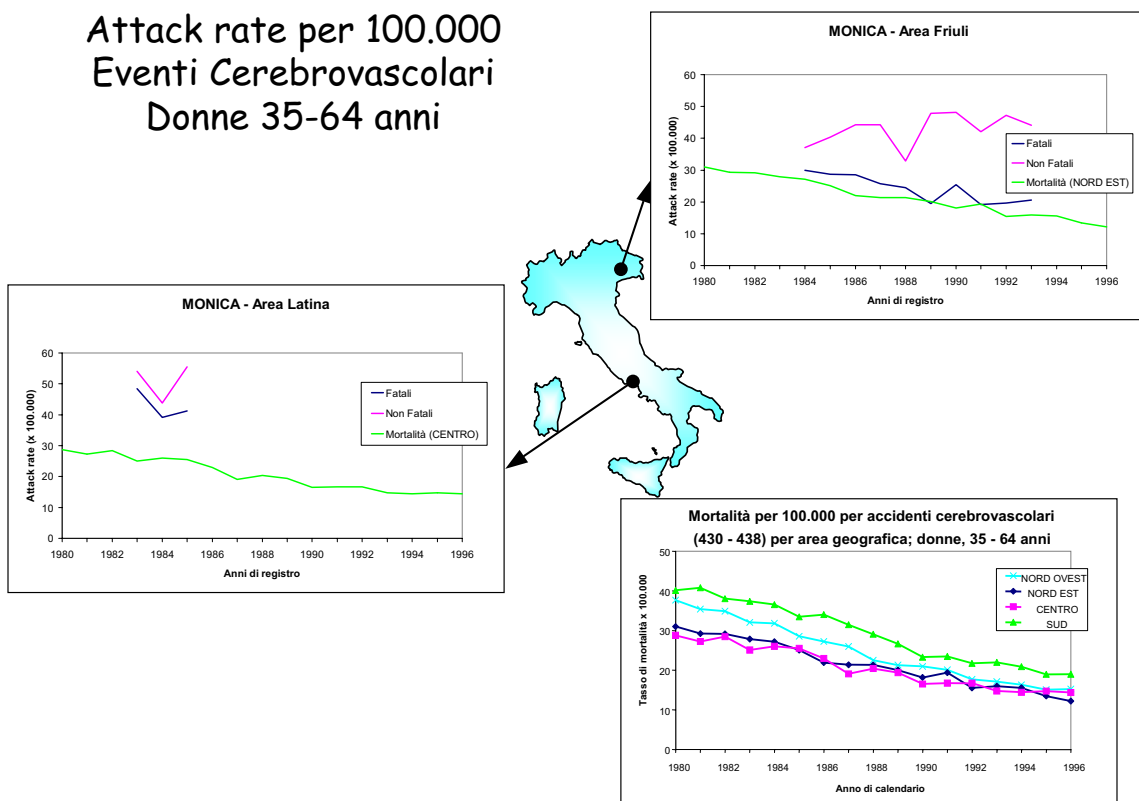


Figure 5. Attack rate and mortality rate per 100,000. Stroke, women aged 35-64 years. Fatal and nonfatal events. Validated and official mortality; mortality rate in the different geographic areas of Italy, Northwest, Northeast, Center, South and Islands.